

USER MANUAL for USB 2.0 CARDBUS

Notice:

This manual is designed to provide information about the USB2.0 Card Bus. Every effort has been made to make this manual as accurate as possible, but no warranty or fitness is implied.

Information contained in this manual is subject to change without prior notice in order to improve reliability, design or function. The manufacturer will not be held responsible for technical or editorial omissions made herein, nor for the incidental or consequential damages resulting from its furnishing, performance, functionality or use. Subsequent changes to this manual will be incorporated into the next edition. We welcome any suggestion regarding this manual or our computer products.

Trademarks

All product names or trademarks are property of their respective owners.

USER MANUAL for USB 2.0 CARDBUS

Overview

The CardBus holds a secure place as the preferred high-performance add-in-mechanism for mobile computing platforms today and in the future. CardBus, the 32-bit high performance bus mastering architecture for PC Cards, was standardized by the PCMCIA. The transfer rate are 480Mbit/sec, and very useful for PC Camera, HDD, Printer...etc, and some other devices with USB2.0 interface.

Features

- Compliant with Universal Serial Bus Specification Revision 2.0 (Data Rate 1.5/12/480 Mbps)
- Compliant with Open Host Controller Interface Specification for USB Rev 1.0a
- Compliant with Enhanced Host Controller Interface Specification for USB Rev 0.95
- All downstream facing ports can handle high-speed (480 Mbps), full-speed (12 Mbps), and low-speed (1.5 Mbps) transaction
- Plug & Play functions
- Supports 32 bit CardBus PC Card Type II slots
- Supports Bus Power

Operation System Requirements

- Windows 98/98SE/2000/ME/XP

Package Contents

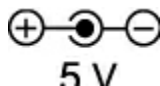
- One USB2.0 CardBus
- One CD driver with user's manual

Cautions

1. Use only switching power adapter with following specifications:

- DC 5V, 1.0A or above for 2 ports USB2.0 CardBus
- DC 5V, 2.0A or above for 4 ports USB2.0 CardBus

(Polarity: outside positive (-) & inside negative (+) ; 3.5mm power jack ; length : 9-9.5mm)



2. Plug switching power adapter to wall outlet before you connect the Card Bus to your computer.

USER MANUAL for USB 2.0 CARDBUS

Safety Precautions

- Do not open the USB2.0 CardBus or attempt to disassemble the internal parts or modify them in any way, the warranty will be voided. The USB2.0 CardBus contains no user-serviceable parts.
- Any damages, or loss of function resulting from any unauthorized modifications done to the USB2.0 CardBus will not be the responsibility of the manufacturer.

Hardware Installation

Plug the USB2.0 CardBus into the PCMCIA Type II slot of the Notebook.

Driver Installation for USB2.0 CardBus

- Under Win 98 / 98SE – page 4~9
- Under Win 2000 / ME / XP – page 10~15

USER MANUAL for USB 2.0 CARDBUS

Driver Installation Under Win 98 / 98SE

1. Windows will detect new hardware and start the “NEC USB Open Host Controller” driver search program. As Figure 1. Click **Next**.

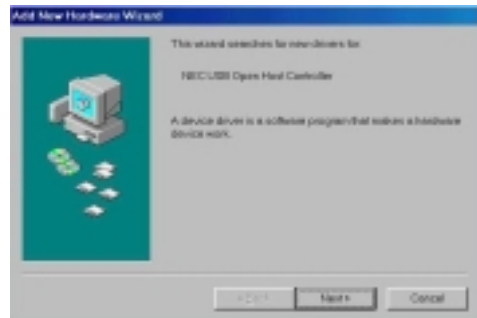


Figure 1

2. Select “Search for the best driver for your device” in Figure 2. Click **Next**.

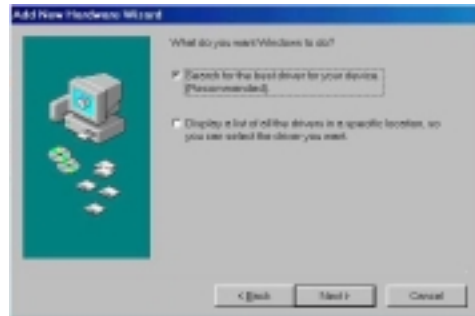


Figure 2

3. Don't select any location and click **Next**. As Figure 3

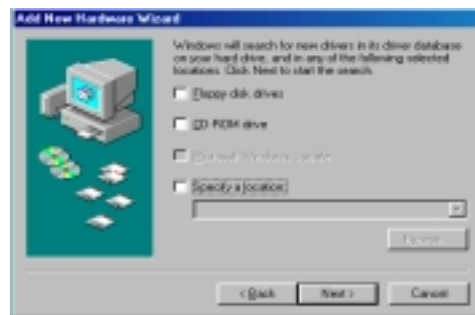


Figure 3

4. Select “The updated driver (Recommended) NEC USB Open Host Controller”. As Figure 4 Click **Next**.



Figure 4

USER MANUAL for USB 2.0 CARDBUS

5. See Figure 5. Click **Next** again.
Please insert the disk labeled “Windows 98 CD disk”

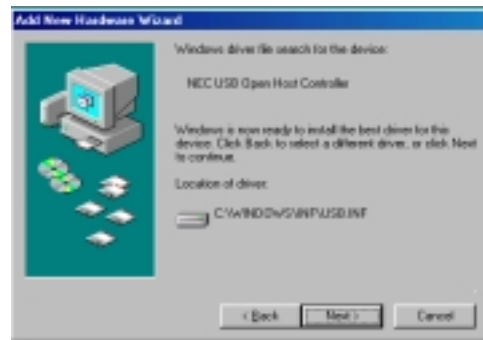


Figure 5

6. After installation, click **Finish**. As Figure 6

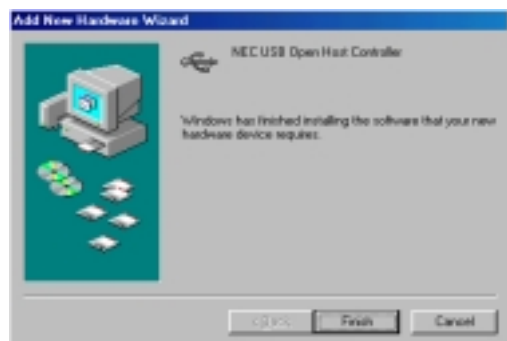


Figure 6

7. As “NEC USB Open Host Controller” driver search program shows up. See Figure 7. Click **Next**.

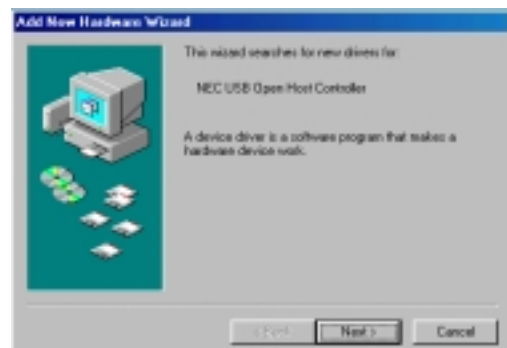


Figure 7

8. Select “Search for the best driver for your device (Recommended)”. Click **Next**. (The dialog is the same as Figure 2) As Figure 8

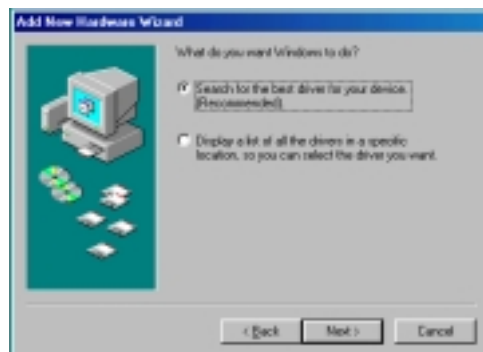


Figure 8

USER MANUAL for USB 2.0 CARDBUS

9. Don't select any location and click **Next**. As Figure 9

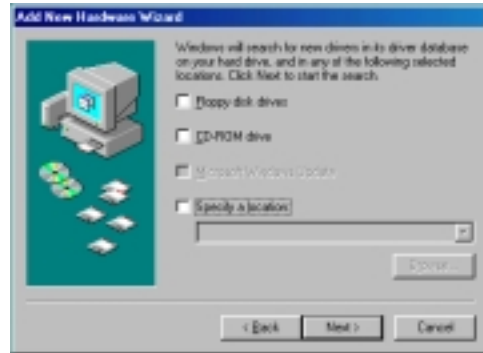


Figure 9

10. Select "The updated driver (Recommended) NEC USB Open Host Controller". As Figure 10.
10. Click **Next**.

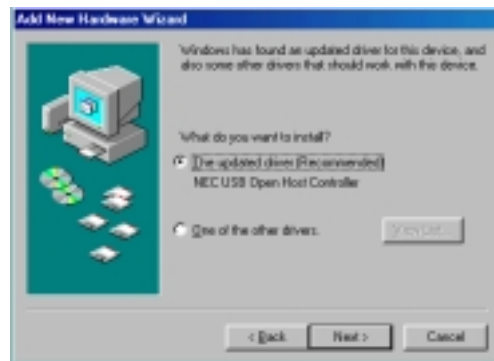


Figure 10

11. See Figure 11. Click **Next** again.
Please insert the disk labeled "Windows 98 CD disk"

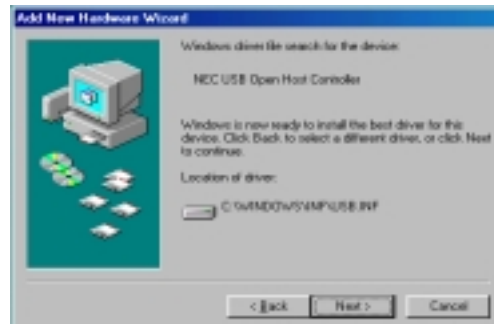


Figure 11

12. After installation, click **Finish**. As Figure 12

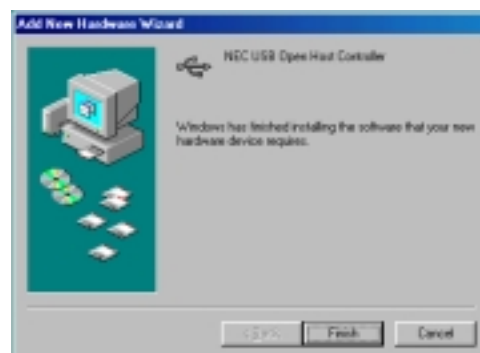


Figure 12

USER MANUAL for USB 2.0 CARDBUS

13. As “PCI Card” driver search program shows up, as Figure 13 Click **Cancel**.
14. Put your operating system CD in the CD-ROM.

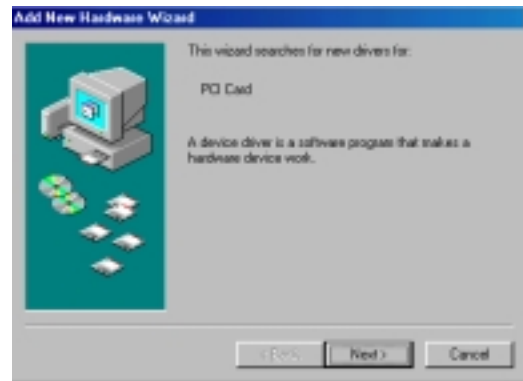


Figure 13

15. “PCI Card” driver search program shows up again, click **Cancel**. As Figure 14

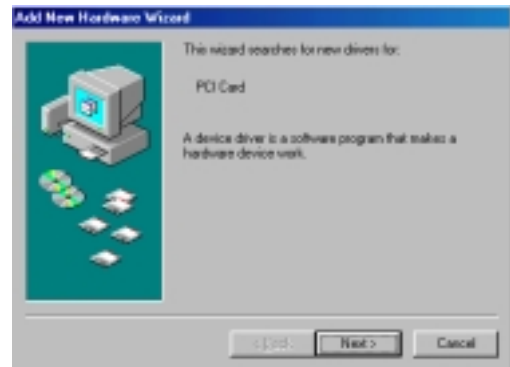


Figure 14

16. Double click “**Explore**” under “My Computer” As Figure 15

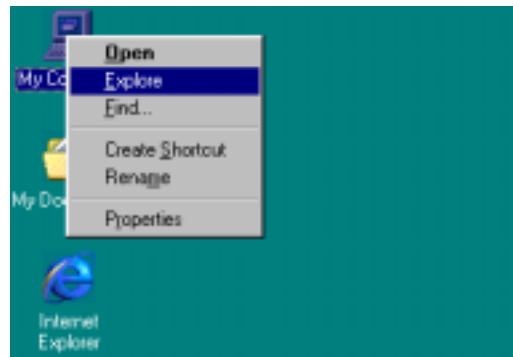


Figure 15

17. Double click the CD ROM drive. As Figure 16

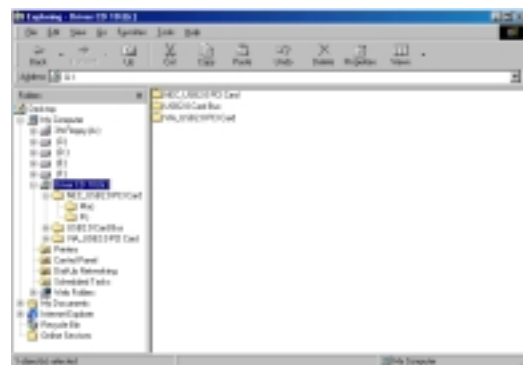


Figure 16

USER MANUAL for USB 2.0 CARDBUS

18. Double click the “USB2.0 CardBus” folder
As Figure 17

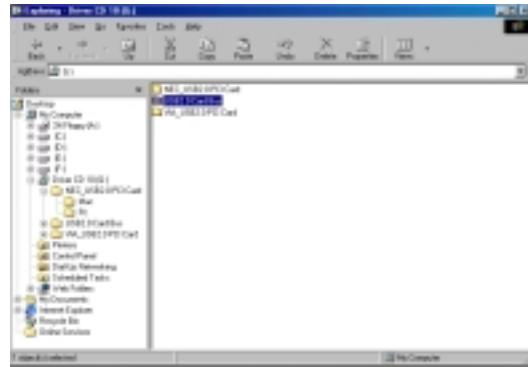


Figure 17

19. Double click the “PC” folder .As Figure 18

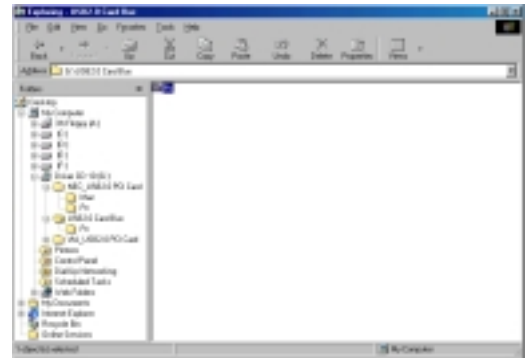


Figure 18

20. Double click the “U2v2_062” file.
As Figure 19

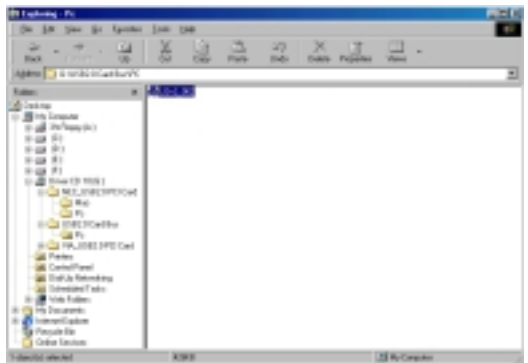


Figure 19

21. Click Next. See Figure 20



Figure 20

USER MANUAL for USB 2.0 CARDBUS

22. Select “Yes, I want to restart my computer” and click **Close**. As Figure 21

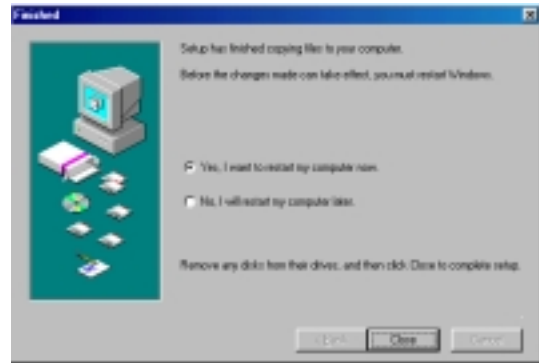


Figure 21

23. Go to “Device Manager” under “System Properties” and check if “NEC PCI to USB Universal Host Controller” is displayed under “Universal Serial Bus Controller” As Figure 22

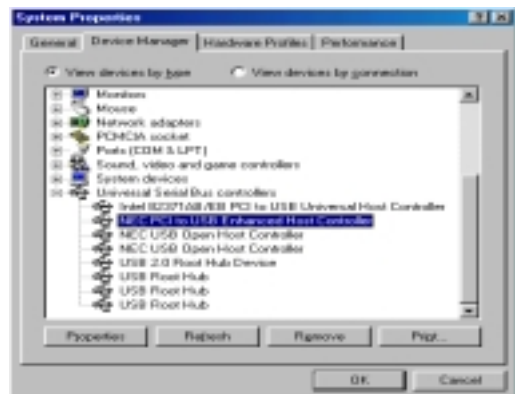


Figure 22

USER MANUAL for USB 2.0 CARDBUS

Driver Installation Under Win ME

1. Windows has found new hardware, select “Automatic search for a better driver [Recommended]”, as Figure 1.
2. Insert CD-Driver and Click **Cancel**.

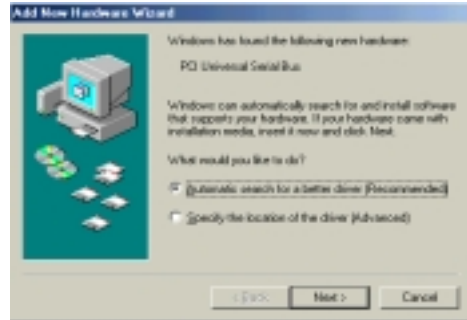


Figure 1

3. Double click “**Explore**” under “My Computer” As Figure 2

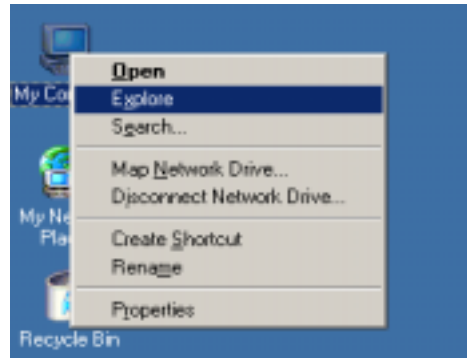


Figure 2

4. See Figure 3. Find the file located in “G:\USB2.0 CardBus\PC\U2V2_064” and double click

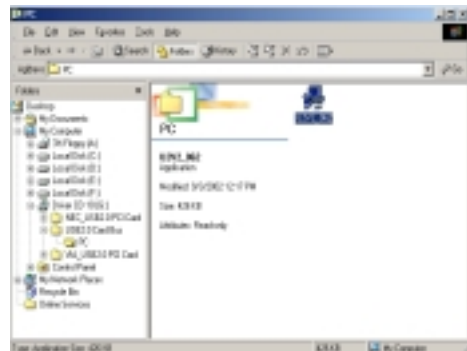


Figure 3

5. Click **Next**. As Figure 4



Figure 4

USER MANUAL for USB 2.0 CARDBUS

6. Select “Yes, I want to restart my computer” and click **Close**. As Figure 5

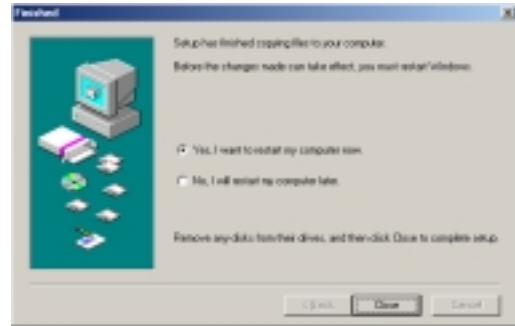


Figure 5

7. See Figure 6. Check if the “NEC PCI to USB Enhanced Host Controller” is installed.

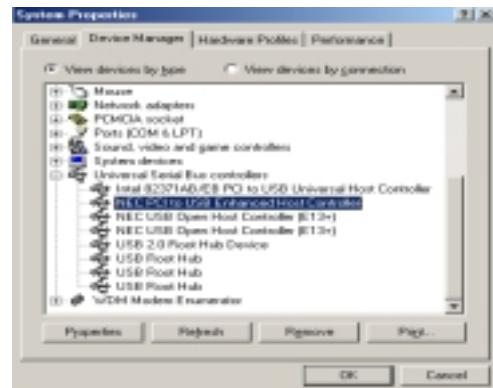


Figure 6

USER MANUAL for USB 2.0 CARDBUS

Driver Installation Under Win 2000

1. See the welcome page, as Figure 1. Click **Next**.



Figure 1

2. Select "Search for a suitable driver for my device (recommended)", as Figure 2. Click **Next**.

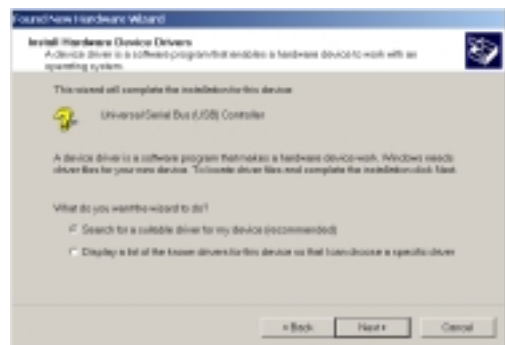


Figure 2

3. Don't select anything and Click **Next**.
As Figure 3.

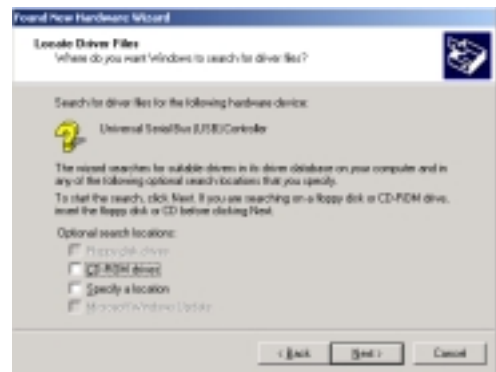


Figure 3

4. Select "Disable the device". As Figure 4

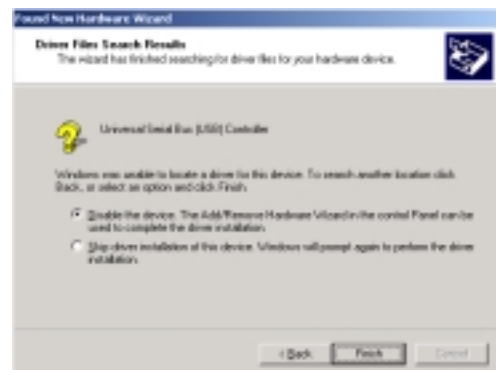


Figure 4

USER MANUAL for USB 2.0 CARDBUS

5. Double click “Explore” under “My Computer” As Figure 5

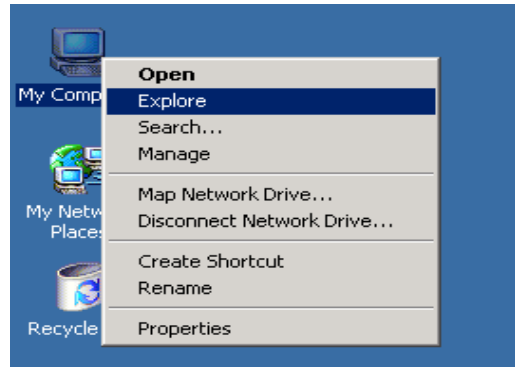


Figure 5

6. See Figure 6. Find the file located in “G:\USB2.0 CardBus\PC\U2V2_064” and double click

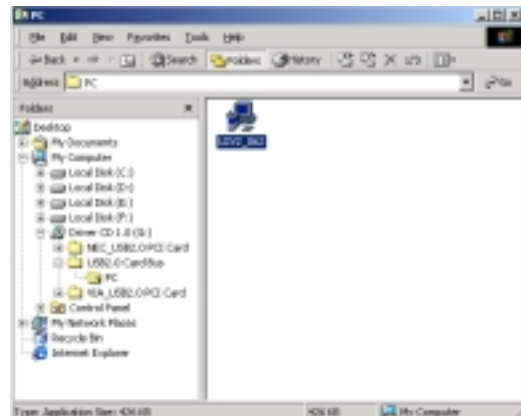


Figure 6

7. See Figure 7, Select “Yes, I want to restart my computer” and click Close.

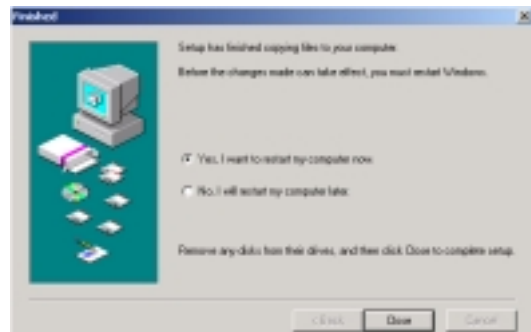


Figure 7

8. See Figure 8. Check if the “NEC PCI to USB Enhanced Host Controller” is installed

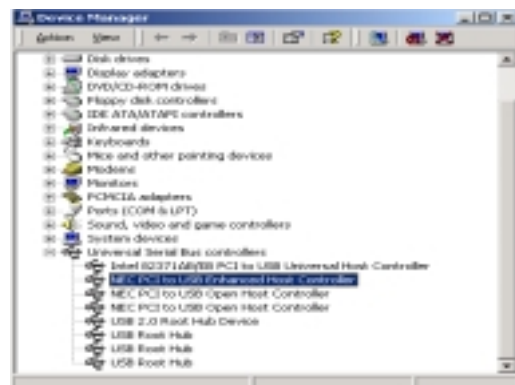


Figure 8

USER MANUAL for USB 2.0 CARDBUS

Driver Installation Under Win XP

1. Insert CD-Driver.
2. See the welcome page, as Figure 1. Click **Cancel**.

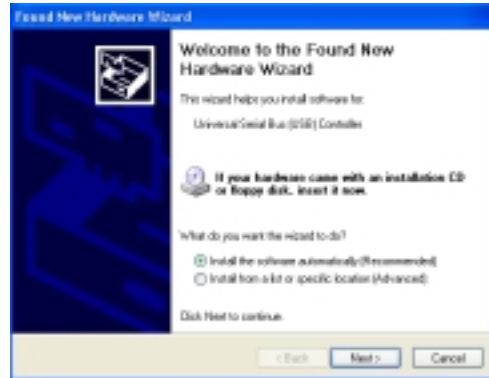


Figure 1

3. Double click **“Explore”** under **“My Computer”** As Figure 2

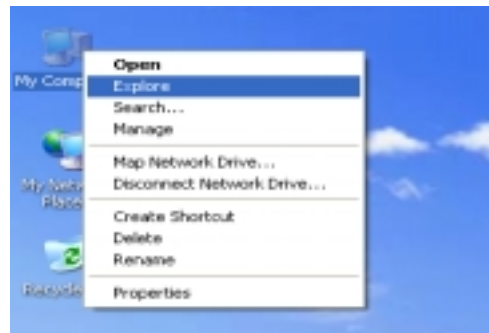


Figure 2

4. See Figure 3. Find the file located in **“G:\USB2.0 CardBus\PC\U2V2_064”** and double click

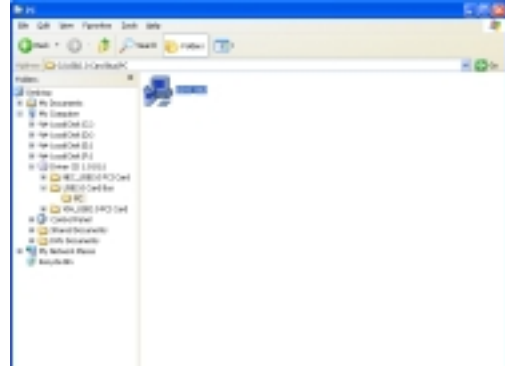


Figure 3

5. Click **“Continue Anyway”**, as Figure 4



Figure 4

USER MANUAL for USB 2.0 CARDBUS

6. Select “Yes, I want to restart my computer”
and click **Close**. As Figure 5

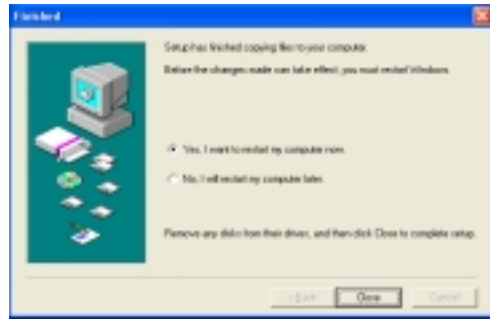


Figure 5

7. See Figure 6. Check if the “NEC PCI to USB Enhanced Host Controller” is installed

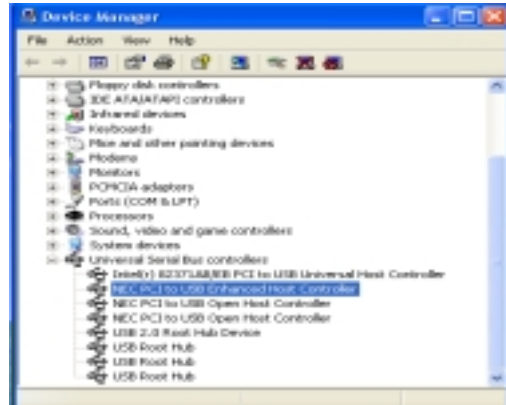


Figure 6